

£125,000

Spencer Street, Mansfield,



Welcome to **BuckleyBrown**, where every home is carefully presented, so you can explore with clarity and confidence.

**BuckleyBrown**  
ESTATE AGENTS

"Stylishly modernised throughout, this attractive two-bedroom terraced home boasts two spacious reception rooms and a private enclosed rear garden, offering the perfect blend of comfort, character and contemporary living."

- Jasmine, Valuer



## YOUR NEXT MOVE

***An exceptionally well-presented two-bedroom terraced home that has been tastefully modernised to create a bright, stylish, and comfortable living environment.***

The property offers two generous reception rooms, well-proportioned accommodation throughout, and a private enclosed rear garden, making it an ideal purchase for first-time buyers, couples, or investors alike.



## THE FINER DETAILS

*Offering well-balanced accommodation arranged over two floors, this beautifully presented home is perfectly suited to modern living, with spacious interiors and low-maintenance outdoor space.*

The ground floor offers two generous and versatile reception rooms that enjoy a subtle open-plan flow while retaining their own distinct spaces, creating an ideal setting for both everyday living and entertaining. To the rear, the fully fitted kitchen is equipped with a range of wall and base units, ample worktop space, a convenient breakfast bar, and provides direct access to the rear garden.

The first floor hosts two spacious double bedrooms, both presented as blank canvases ready for a new owner to personalise, together with a well-appointed three-piece bathroom accessed directly from the landing.

Externally, the property benefits from a private enclosed rear garden, featuring a low-maintenance gravel seating area that provides the perfect space for outdoor dining, relaxing, or entertaining during the warmer months.





**BuckleyBrown**  
ESTATE AGENTS





*Imagine*  
you may say i'm a dreamer  
but i'm not the only one  
i hope someday you'll join us  
and the world will live as *One*





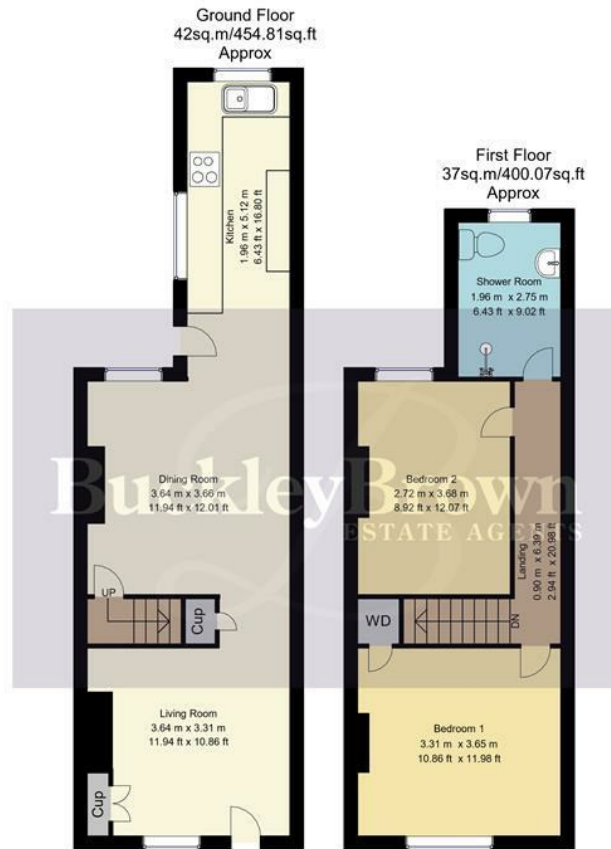
## LIFE IN MANSFIELD

*Situated in the popular market town of Mansfield, the property enjoys a convenient location with an excellent range of everyday amenities close at hand.*

The town centre offers a variety of high street retailers, independent shops, cafés, restaurants, and leisure facilities, while larger supermarkets and retail parks provide everything needed for day-to-day living. Families are well catered for with a choice of well-regarded schools, healthcare facilities, and recreational spaces nearby.

Mansfield also benefits from excellent transport connections, making it an ideal base for commuters. Regular rail services provide links to Nottingham, Worksop, and beyond, while the nearby A38, A60, and M1 motorway offer straightforward access to Nottingham, Sheffield, Derby, and surrounding areas. For those who enjoy the outdoors, the beautiful landscapes of Sherwood Forest and the surrounding Nottinghamshire countryside are just a short drive away, offering a wealth of walking, cycling, and leisure opportunities.





Whilst every attempt has been made to ensure the accuracy of the floor plan contained here, no responsibility is taken for incorrect measurements of doors, windows, appliances and room or any error, omission or misstatement. Exterior and interior walls are drawn to scale based on interior measurements. Any figure given is for initial guidance only and should not be relied on as basis of valuation. These plans are for marketing purposes only and should be used as such by any prospective purchase. Specially no guarantee is should not be relied on as a basis of valuation. These plans are for marketing purposes only and should be used as such by any prospective purchase. Specifically no guarantee is given on the total square footage of the property if quoted on this plan.

CC Ltd ©2018

## Key Features

Move in ready condition

---

Two spacious and versatile reception rooms

---

Modern kitted kitchen with breakfast bar

---

Two double bedrooms

---

Three piece family bathroom suite

---

Private enclosed rear garden with gravel

---

EPC Rating - C

---

Council Tax Band - A

---

Approx Sq Ft - 854.88

---

**BuckleyBrown**  
ESTATE AGENTS



These particulars are intended as a guide only and do not form part of any offer or contract. All descriptions, measurements, images and plans are provided for illustration purposes and should not be relied upon as statements of fact. Prospective purchasers should satisfy themselves as to the accuracy of the information. Buckley Brown Estate Agents accept no liability for any loss arising from reliance on these details.

© Buckley Brown Estate Agents 2026. All rights reserved.

Exceptional homes deserve  
exceptional representation.

Let's Chat.

01623 633633

[mansfield@buckleybrown.co.uk](mailto:mansfield@buckleybrown.co.uk)

[buckleybrown.co.uk](http://buckleybrown.co.uk)

**BuckleyBrown**  
ESTATE AGENTS